

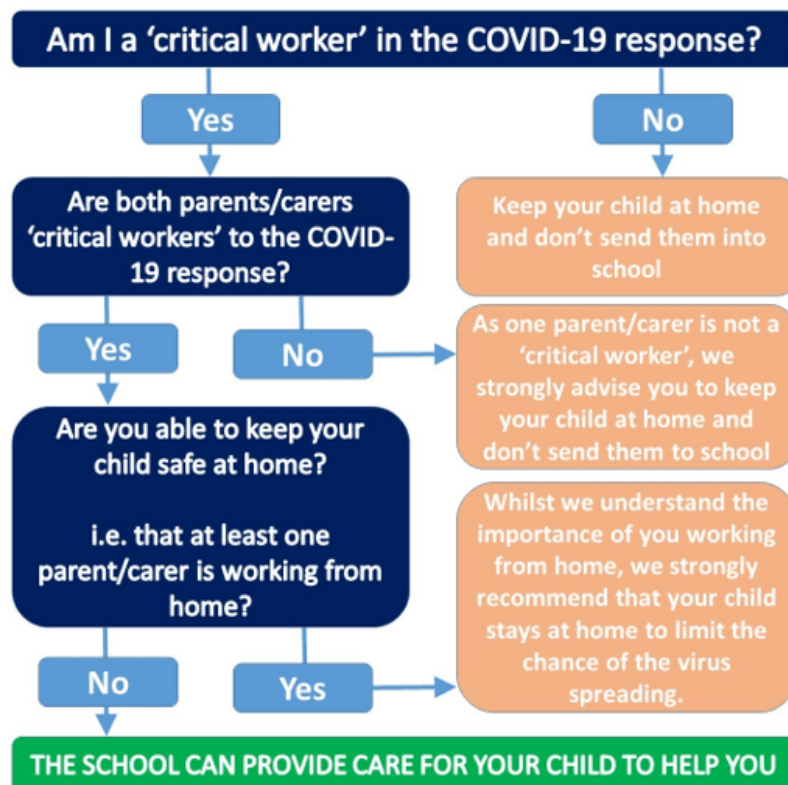
## CORONAVIRUS UPDATE

### School Closure

As you are aware the Government announced that schools would close from Friday 20<sup>th</sup> March for the vast majority of students and has **“asked parents to keep their children at home, wherever possible, and to remain open only for those children who absolutely need to attend”**. Schools were asked to continue to provide care for a limited number of children - children who are vulnerable (those children designated as a Child in Need, subject to Child Protection Order, Looked After Children, young carers, disabled children or children who have an Educational Health Plan) and children whose parents are critical to the Covid-19 response and cannot be safely cared for at home. The full information about which parents/carers this would apply to can be found at:

<https://www.gov.uk/government/publications/coronavirus-covid-19-maintaining-educational-provision/guidance-for-schools-colleges-and-local-authorities-on-maintaining-educational-provision>

however the flow chart to the right provides an ‘at a glance’ guide as to whether your child should still be attending school:



The latest guidance for supporting vulnerable students can be found at:

[https://www.gov.uk/government/publications/coronavirus-covid-19-guidance-on-vulnerable-children-and-young-people?utm\\_source=62ad7c10-fa33-4187-972d-85e99181e619&utm\\_medium=email&utm\\_campaign=govuk-notifications&utm\\_content=immediate](https://www.gov.uk/government/publications/coronavirus-covid-19-guidance-on-vulnerable-children-and-young-people?utm_source=62ad7c10-fa33-4187-972d-85e99181e619&utm_medium=email&utm_campaign=govuk-notifications&utm_content=immediate)

For those students who do need to attend school and the staff who are in the building supporting them, strict social distancing rules are being applied according to the guidelines which can be found at:



[https://www.gov.uk/government/publications/coronavirus-covid-19-implementing-social-distancing-in-education-and-childcare-settings?utm\\_source=380d162d-e45d-4e57-b5f6-95cfafce29a9&utm\\_medium=email&utm\\_campaign=govuk-notifications&utm\\_content=immediate](https://www.gov.uk/government/publications/coronavirus-covid-19-implementing-social-distancing-in-education-and-childcare-settings?utm_source=380d162d-e45d-4e57-b5f6-95cfafce29a9&utm_medium=email&utm_campaign=govuk-notifications&utm_content=immediate)

Since schools closed further guidance has been issued regarding protecting the people in society who are most likely to be susceptible to Covid-19 and the most up to date information on the shielding process can be found at:

[https://assets.publishing.service.gov.uk/government/uploads/system/uploads/attachment\\_data/file/875126/Easy\\_read\\_guidance\\_on\\_shielding\\_March\\_2020.pdf](https://assets.publishing.service.gov.uk/government/uploads/system/uploads/attachment_data/file/875126/Easy_read_guidance_on_shielding_March_2020.pdf)

Please remember that **everyone** currently need to follow the government guidelines regarding social distancing:

### How to stick together, by staying apart



**Stay at home**  
no unnecessary journeys  
or social contact



Only leave home for  
**essential shopping**  
or **medical needs**



Or exercise once a day



Or travelling to work if  
absolutely necessary



Public gatherings of  
**more than two people are banned** -  
excluding people you live with



Police may be able to fine you  
if you don't follow the rules

BBC

Children attending from Monday 23<sup>rd</sup> March have already confirmed with the school. Children should not arrive unexpected.

Please note that for safeguarding reasons we must be aware of the children that we are expecting to attend the school on a daily basis; therefore, if you have informed us that your child will be attending school we will treat their attendance as we would if they were attending school on a "normal school day", therefore they will be subject to a morning and afternoon registration and we will call you if your child is absent as we would on a "normal school day". We will be operating normal school rules during your child's time in school however they will not be expected to wear their school uniform. The school canteen is also being staffed during the period of closure so food will be available for your child however please be aware that this will be limited to cold food only.

## Children working from home

Thank you to those of you that have supported your children's learning at home during this difficult period. It essential your children keep up with their learning and do at least a little of something every day.

### READING EVERY DAY IS ESSENTIAL FOR FUTURE PROGRESS ACROSS ALL SUBJECTS!

Please follow this guidance to ensure you child stays up to date with their learning. Make sure your child does the following daily:

- 1) Practices their phonics using the phoneme cards or tricky words (Reception) and/or reads for a minimum of 30 minutes (Reception, Year 1 & 2) or an hour (Years 3 - 6)
- 2) Completes at least one maths and one English activity from the work packs they have been assigned. (Reception to Year 6)
- 3) Completes at least one activity from the Enrichment grids (Years 1 - 6) or load a picture/video of your child's learning/play on to Tapestry (Nursery and Reception)
- 4) 30+ minutes on Mathletics (Year 1 to Year 6)
- 5) 30+ minutes on ReadingEggs (Reception to Year 6)
- 6) Take part in physical exercise of play for at least 1 hour. (Nursery to Year 6)
- 7) Spends at least 10 minutes talking to someone about the things they have been doing and what they have learned. (Nursery to Year 6)
- 8) Has a story read to them by someone else. (Nursery to Year 6)
- 9) Laughs about something, anything!
- \* 10) Year 6 pupils complete 1+ hours on SATS companion. – this is still useful even if SATs are cancelled.

Teachers will set tasks and direct you to useful free websites through Marvellous Me (Years 1 to 6) or Tapestry (Nursery and Reception) Staff may even check in with you through school emails or the school phone line.

To access Mathletics, ReadingEggs and a range of other websites that the children use at school please go to <https://therydalacademy.rmunity.com/> and ask the children to log-in with the same log-in and password they use in school.

To contacts teachers directly about learning tasks please use the emails below:

Nursery – [mchapman@rydal.swiftacademies.org.uk](mailto:mchapman@rydal.swiftacademies.org.uk)

RF - [ledgar@rydal.swiftacademies.org.uk](mailto:ledgar@rydal.swiftacademies.org.uk)

RS – [lstaples-clough@rydal.swiftacademies.org.uk](mailto:lstaples-clough@rydal.swiftacademies.org.uk)

RW - [ewright@rydal.swiftacademies.org.uk](mailto:ewright@rydal.swiftacademies.org.uk)

1C - [csenior@rydal.swiftacademies.org.uk](mailto:csenior@rydal.swiftacademies.org.uk)

1J - [jsalt@rydal.swiftacademies.org.uk](mailto:jsalt@rydal.swiftacademies.org.uk)

1M - [amorris@rydal.swiftacademies.org.uk](mailto:amorris@rydal.swiftacademies.org.uk)

2E - [kely@rydal.swiftacademies.org.uk](mailto:kely@rydal.swiftacademies.org.uk)

2P - [aplatten@rydal.swiftacademies.org.uk](mailto:aplatten@rydal.swiftacademies.org.uk)

2W - [cwhinfield@rydal.swiftacademies.org.uk](mailto:cwhinfield@rydal.swiftacademies.org.uk)

3B - [ablackburn@rydal.swiftacademies.org.uk](mailto:ablackburn@rydal.swiftacademies.org.uk)

3P - [ipark@rydal.swiftacademies.org.uk](mailto:ipark@rydal.swiftacademies.org.uk)

3T - [ataylor@rydal.swiftacademies.org.uk](mailto:ataylor@rydal.swiftacademies.org.uk)

4D - [vdenham@rydal.swiftacademies.org.uk](mailto:vdenham@rydal.swiftacademies.org.uk)

4M - [kmellard@rydal.swiftacademies.org.uk](mailto:kmellard@rydal.swiftacademies.org.uk)

4W - [swoodthorpe@rydal.swiftacademies.org.uk](mailto:swoodthorpe@rydal.swiftacademies.org.uk)



5M - [mcockerill@rydal.swiftacademies.org.uk](mailto:mcockerill@rydal.swiftacademies.org.uk)

5R - [rcampbell@rydal.swiftacademies.org.uk](mailto:rcampbell@rydal.swiftacademies.org.uk)

5W - [awaller@rydal.swiftacademies.org.uk](mailto:awaller@rydal.swiftacademies.org.uk)

6E - [sellis@rydal.swiftacademies.org.uk](mailto:sellis@rydal.swiftacademies.org.uk)

6M - [cmawson@rydal.swiftacademies.org.uk](mailto:cmawson@rydal.swiftacademies.org.uk)

6W - [ewells@rydal.swiftacademies.org.uk](mailto:ewells@rydal.swiftacademies.org.uk)

### **National testing and Year 6 SATS**

The Secretary of State for Education announced yesterday, Wednesday 18 March, that the 2019/20 national curriculum assessments will not take place due to the coronavirus (COVID-19) pandemic.

This means the following assessments planned between April and July 2020 are cancelled:

- Year 1 and 2 phonics screening check
- Year 2 end of key stage 1 teacher assessments
- Year 4 multiplication tables check
- Year 6 end of key stage 2 assessments (SATs tests and Writing teacher assessment)

I have spoken to Year 6 pupils who were in school today and tried to answer their very sensible questions and reassure them that this will not have a negative impact on them moving forward. It should be simply one less thing for them to worry about so they can concentrate on the key curriculum learning they are still able to do at home or in school.

### **What about any key events that are missed?**

We will review revised dates or permanent cancellation of Parent Pupil Consultations, trips and school events including end of year events that are missed due to closure and will let you know about new arrangements once a reopening date is confirmed.

### **How will the school communicate during closure periods?**

We will provide updates via email, Facebook, Twitter, Marvellous Me, Tapestry and on the school website as the situation changes. We may also text but this is expensive for the school. Please ensure we have your email as this will be our primary communication method. If we do not have a current email address please send an email to the address above entitled 'email contact information' containing your name, the name of your child/children and the email address you are currently using.

If you need to contact the school please email [officeadmin@rydal.swiftacademies.org.uk](mailto:officeadmin@rydal.swiftacademies.org.uk)

We are proud to serve OUR community and will do so to the best of our ability through this uncertain period. Our love and thoughts remain with all pupils and families. If we can help in any way please get in touch.

Yours sincerely,

Mr J.M.Armitage B.Ed (Hons); NPQH  
Headteacher

