

---

## Coronavirus Update – 16<sup>th</sup> March 2020

Dear Parent/Carer

Due to the high volume of media coverage around the Coronavirus, a number of parents and staff have asked specifically about the measures we have in place currently and what would happen if we did get a confirmed case in one of the Trust schools; therefore, we thought it would be helpful to explain what we are currently doing and what we would do in the event of a potential closure.

Firstly, we are receiving daily advice and guidance from the DfE and Public Health England and will follow the national guidelines on how to respond to any suspected and confirmed cases of Covid-19 Coronavirus. Whilst we need to be aware of the current situation we also need to ensure a proportionate response. Therefore, Swift Academies (Longfield Academy, Hurworth School and the Rydal Academy), have reviewed our emergency plans and developed contingencies should we have to close or partially close due to government instruction. In the event of any closure, partial or full, we will contact you via a message and place messages on our various social media platforms (including our website). **Most importantly, we remain open and hope for excellent attendance.**

We are taking the concerns we have in our community seriously and we are taking proportionate and proactive approaches as follows:

### What are Swift Academies currently doing to reduce the chances of the virus getting into school?

- We are closely monitoring the local and national picture
- We are liaising with the Local Authority and with the Department for Education and Public Health England on a regular basis
- We are teaching the children best hygiene practice and have sent information out to parents and encouraging frequent hand washing
- Our cleaning teams have increased the cleaning on key touch points (handles, doors, rails etc.) and are now using anti-viral products
- Every classroom is cleaned daily
- We are monitoring daily any child or staff absence and are asking about any symptoms they may have and advising accordingly
- We are being proactive in finding out about travel arrangements now and in the future of staff and pupils
- We are adapting any activities which have an increased potential of the spreading of virus e.g. food tasting, meet and greet, educational visits etc.

### What will Swift Academies do if there is a confirmed case in one of our schools?

- We will immediately contact the Local Authority and take advice from them, Public Health England and the guidance in place at that time from the World Health Organisation
- We will then make a decision as to what needs to happen
- We will ensure we communicate as promptly as possible and keep you well informed.

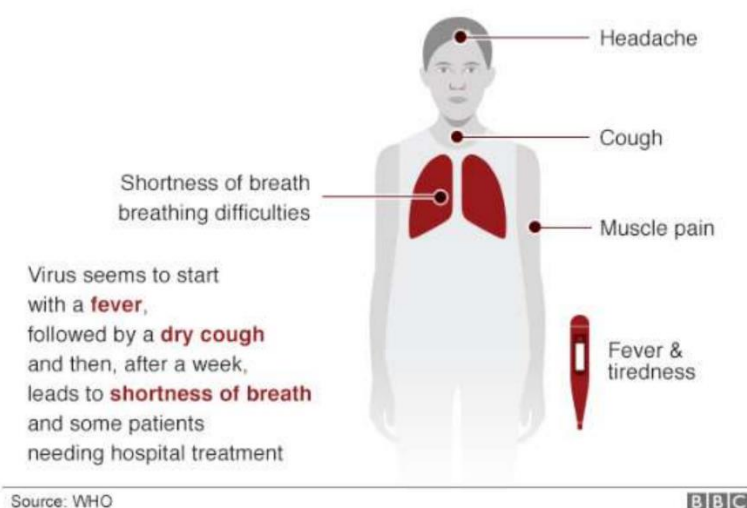
### What about staff and children that have recently visited other countries?

- We are investigating the locations of where people have travelled to as we are made aware; we are keeping records and seeking the correct advice as soon as we are made aware of recent/future travel.

### What if my child has any symptoms?

- If you have concerns about your child's health in relation to the Coronavirus please ring the NHS on 111. **The general advice is to not attend medical centres.** Coronavirus seems to start with a fever, followed by a dry cough and after a week, it leads to shortness of breath and some patients require hospital treatment.
- In addition we would highlight the recent Government guidance which is clear that pupils should not come into school for 7 days from the point at which they first show any sign of one or more of the following symptoms:
  - a) Fever (37.8 degrees or above)
  - b) a new dry cough
  - c) Shortness of breath
- If your child begins to display any of these symptoms during the school day you will be contacted and asked to collect your child as soon as possible and to observe the 7 day self-isolation guidance. We would thank you for your understanding and support with this as this will limit the spread of infection. The safety of all our pupils is paramount and we are particularly mindful of those with underlying respiratory issues and those with low immunity.
- If any of these symptoms are present or you are worried in any way that you or your child may have contracted coronavirus you should contact NHS 111 immediately to seek advice. Please then notify the school about the action you have been asked to take including self-isolation.

### Symptoms of coronavirus (Covid-19)



The information for schools is published by Public Health England on their website. You can access more information on Coronavirus and the current actions at

<https://www.gov.uk/guidance/coronavirus-covid-19-informationfor-the-public> and the educational settings guidance is available at <https://www.gov.uk/government/publications/guidance-to-educationalsettings-about-covid-19>

The Department for Education coronavirus helpline is available to answer questions about COVID-19 relating to education and children's social care. Staff, parents and young people can contact this helpline as follows:

Phone: 0800 046 8687  
Email: DfE.coronavirushelpline@education.gov.uk  
Opening hours: 8am to 6pm (Monday to Friday)

### **What we are doing in the event of a potential closure?**

As stated within this letter we are doing our utmost to ensure that we avoid any closure, partial or full. However, we felt that it was prudent to allow you the opportunity to view and feedback to us prior to a potential closure the strategies that we are planning to implement, **if the situation arises**, to endeavour to ensure that your child's education continues in the best possible manner.

### **Potential Closure Plan: -**

During a period of self-isolation or school closure please follow this guidance to ensure you child stays up to date with their learning.

Make sure your child does the following daily:

- 1) Practices their phonics using the phoneme cards or tricky words (Reception) and/or reads for a minimum of 30 minutes (Reception, Year 1 & 2) or an hour (Years 3 - 6)
- 2) Completes at least one maths and one English activity from the work packs they have been assigned. (Reception to Year 6)
- 3) Completes at least one activity from the Enrichment grids (Years 1 - 6) or load a picture/video of your child's learning/play on to Tapestry (Nursery and Reception)
- 4) 30+ minutes on Mathletics (Year 1 to Year 6)
- 5) 30+ minutes on ReadingEggs (Reception to Year 6)
- 6) Take part in physical exercise of play for at least 1 hour. (Nursery to Year 6)
- 7) Spends at least 10 minutes talking to someone about the things they have been doing and what they have learned. (Nursery to Year 6)
- 8) Has a story read to them by someone else. (Nursery to Year 6)
- 9) Laughs about something, anything!
- \* 10) Year 6 pupils complete 1+ hours on SATS companion.

Teachers will set tasks and challenges through Marvellous Me (Years 1 to 6) or Tapestry (Nursery and Reception).

To access Mathletics, ReadingEggs and a range of other websites that the children use at school please go to <https://theyrydalacademy.rmunify.com/> and ask the children to log-in with the same log-in and password they use in school.

### **What about any key events that are missed?**

If any Parent Pupil Consultations, trips or school events are missed due to closure we will let you know about new arrangements once a reopening date is confirmed.

If SATs or national tests are effected we will inform the relevant Year Groups once information is received from the Department of Education.

### **How will the school communicate during closure periods?**

We will provide updates via email, Facebook, Twitter and on the school website as the situation changes.

If you need to contact the school please email [officeadmin@rydal.swiftacademies.org.uk](mailto:officeadmin@rydal.swiftacademies.org.uk)

Please ensure we have your email as this will be our primary communication method. If we do not have a current email address please send an email to the address above entitles 'email contact information' containing your name, the name of your child/children and the email address you are currently using.

### **Conclusion**

As we refine this plan and in the event of having to use it we will send out further information. I know that this is a difficult time but I hope that this letter provides you with some comfort that we are being pro-active in making the best possible preparations to both avoid and be prepared for a possible closure.

In the meantime, we continue to operate a full and normal school day.

Thank you for supporting your children with their learning through this difficult period.

Yours sincerely,

Mr J.M.Armitage B.Ed (Hons); NPQH  
Headteacher

